



jordan fishwick

Graham Drive Disley Stockport



**Graham Drive Disley Stockport
SK12 2JJ**

Price £570,000



The Property

Commanding fine rear views towards Kinder Scout and occupying an enviable position within an established, sought after location in Disley Village, a three/four bedroom detached home. Well presented throughout and offering versatile split level accommodation over three floors with good sized gardens and driveway parking. Comprising: entrance hall, living room, dining room, conservatory, re-fitted kitchen, two ground floor double bedrooms, bathroom with separate shower, first floor master bedroom with panoramic views and en-suite shower room plus a lower ground floor sitting room/bedroom with gym/utility area and additional wc. Pvc double glazing, gas central heating and viewing highly recommended.



- Fantastic Rear Views
- Sought After Location
- Versatile Detached Home
- Three/Four Bedrooms
- Driveway and Gardens
- Well Presented Throughout
- Lower Ground Floor With Sitting Room
- Large Utility/Gym Area
- Superb Master Bedroom

Postcode

SK12 2JJ

EPC Rating


C

Local Authority

Cheshire East

Council Tax

E

Energy Efficiency Rating		
	Current	Potential
Very energy efficient - lower running costs		
(92 plus) A		
(81-91) B		
(69-80) C	69	77
(55-68) D		
(39-54) E		
(21-38) F		
(1-20) G		
Not energy efficient - higher running costs		
England & Wales	EU Directive 2002/91/EC 	



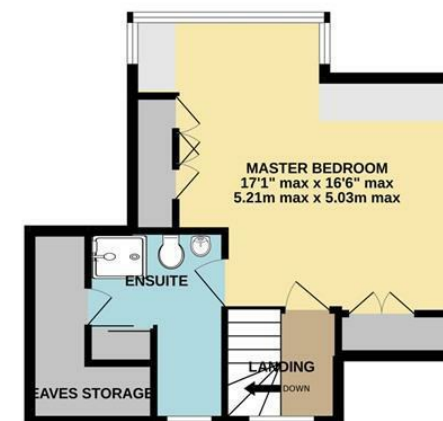
BASEMENT LEVEL



GROUND FLOOR



1ST FLOOR



Whilst every attempt has been made to ensure the accuracy of the floorplan contained here, measurements of doors, windows, rooms and any other items are approximate and no responsibility is taken for any error, omission or mis-statement. This plan is for illustrative purposes only and should be used as such by any prospective purchaser. The services, systems and appliances shown have not been tested and no guarantee as to their operability or efficiency can be given.
Made with Metropix ©2022



These particulars are believed to be accurate but they are not guaranteed and do not form a contract. Neither Jordan Fishwick nor the vendor or lessor accept any responsibility in respect of these particulars, which are not intended to be statements or representations of fact and any intending purchaser or lessee must satisfy himself by inspection or otherwise as to the correctness of each of the statements contained in these particulars. Any floorplans on this brochure are for illustrative purposes only and are not necessarily to scale.

Offices at: Chorlton, Didsbury, Disley, Hale, Glossop, Macclesfield, Manchester Deansgate, Manchester Whitworth Street, New Mills, Sale, Wilmslow and Withington

14 Market Street, Disley, Cheshire, SK12 2AA

01663 76 78 78

disley@jordanfishwick.co.uk

www.jordanfishwick.co.uk